

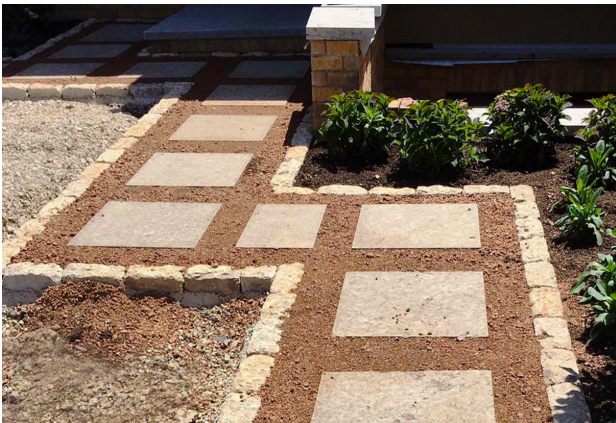
Materials Needed:

- ☐ 1 1/2" Crusher Run
- ☐ Paver Sand
- ☐ Pavers
- ☐ Choice of border material (4" chop suggested)
- ☐ Permaloc Aluminum Edging (optional)

INSTRUCTIONS

Informal

- 1 Place pavers or flagstones in desired layout
- 2 Mark positions and then remove
- 3 Dig out marked areas so stones lay flush on the ground
- 4 Replace stones



Disclaimer: This is just one way to create a simple version of this project, and is not the only way to do so. Consider doing your own research, or watching instructional videos for more detailed instructions.

INSTRUCTIONS

Walkway and pedestrian use

- 1 Measure out and mark borders, and lay border stone, or Permaloc Aluminum Edging (optional)
- 2 Level and compact base (may require digging out areas)
- 3 Add 4-6 " crusher run base (go thicker if laying over sand)
- 4 Spread 1 inch of paver sand
- 5 Lay pavers
- 6 Add sand to joint cracks and compact to stabilize pavers

INSTRUCTIONS

Driveway and heavy-duty use

- 1 Follow steps from **Walkway and pedestrian use**, but modify step 2 to a 12" crusher run base to accommodate for added height



